

# Team 1 - Knowledge Organiser – ‘Our Local Landscape’

**What you should know already:** From previous learning in Science you should know about similarities and differences in relation to places, objects, materials and living things. You should be able to talk about the features of your own immediate environment and how environments might vary from one another. You can safely use and explore a variety of materials, tools and techniques, experimenting with colour, design, texture, form and function. You should know that different colours can be mixed together to make new colours and be able to use a variety of artistic effects to express yourself.

## Top Vocabulary

Local	the area around our home and school
Landscape	all the visible features of an area of land
Impressionism	a style of painting, using quick brush strokes to create an ‘impression’ of something
Primary colours	red, yellow, blue – other colours can be made by mixing a combination of these
Secondary colours	colours made from primary colours – orange (red and yellow), purple (blue and red), green (yellow and blue)
Key	helps us to understand map symbols
Map Symbol	is a picture or a sign on a map that represents something else
Physical Geography	natural features such as: beach, forest, sea, mountain, weather
Human Geography	man-made features such as: shops, farms, cities
Materials	anything used for building or making something else
Properties	a characteristic of a material eg. hard, waterproof, solid, rough,

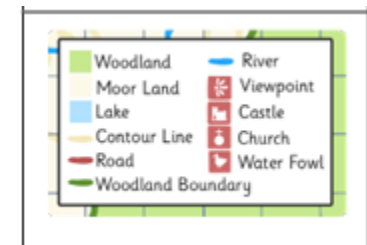
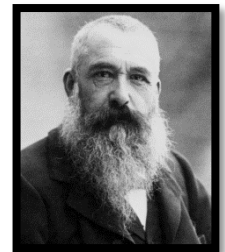
## Synopsis

This term we will be focusing on the theme of ‘Our Local Landscape’ with a Geography, Science and Art focus. The children will be exploring their local landscape, learning to read maps and use compasses. They will create maps of the school site with symbols and keys. In Science, the children will explore the properties of everyday materials and conduct a scientific investigation into the waterproofness of materials. In Art, the children will be learning about Claude Monet. In particular, we will focus on his landscape paintings as we explore Impressionism. The children will then create their own landscape in the style of Monet using watercolours.

## Key Knowledge

Materials	Properties of materials
Wood 	 It is <i>hard</i> .
Plastic 	 It is <i>waterproof</i> .
Glass 	 It is <i>solid</i> .
Metal 	 It is <i>runny</i> .
Rock 	 It is <i>rough</i> .
	 It is <i>smooth</i> .

Claude Monet was a French artist who is well-known for his Impressionist paintings.



A map is a drawing of an actual place that uses lines and symbols to represent real life objects. People have used maps for hundreds of years to help them travel from place to place.